

ABELDent

Moving ABELDent to different drive



July 2019

No part of this publication may be reproduced, transmitted, stored in a retrieval system, nor translated into any human or computer language, in any form or by any means, electronic, mechanical, magnetic, optical, chemical, manual or otherwise, without the prior written permission of the copyright owner, ABELDent Inc. 3310 South Service Rd., Burlington, Ontario, Canada L7N 3M6.

The copyrighted software that accompanies this guide is licensed to the End User only for use in strict accordance with the End User License Agreement, which should be read carefully before commencing use of the software. Information in this document is subject to change without notice and does not represent a commitment on the part of ABELDent Inc.

ABELDent CS® is a registered trademark of ABELDent Inc.

Contents

- Overview 4
- Transferring Files..... 4
 - Installing ABELDent 4
- Reinstalling ITRANS..... 5
- Change SQL Maintenance Plan 5
 - Editing the Maintenance Plans 6

Overview

The purpose of this document is to detail the steps required for the ABELDent program to move to a different hard drive location.

Transferring Files

In order to begin the process of moving ABELDent to a new/different drive location, we must transfer the existing files over to the new location.

- 1 Locate existing ABELDent folder (e.g. C:\ABELDent)
- 2 Copy the folder over to the New target location (e.g. D:\ABELDent)

Upon completion we must re-install ABELDent in order to point to the updated drive location:
(For detailed instructions on first time set up see: Installing ABELDent on Client Computer)

Installing ABELDent

Either from CD or Server location:

- 1 Run the **ABELDent installer**
- 2 **Chose US English**, Click Next
- 3 **Accept the terms** and conditions and type your name
- 4 **Choose the drive** you wish to install ABELDent on
- 5 **Choose Client** under Select Configuration window
- 6 **Leave "Fictional" checked**
- 7 **Choose the server name** without backslashes
- 8 The SQL Server name is the same as the Server Name*

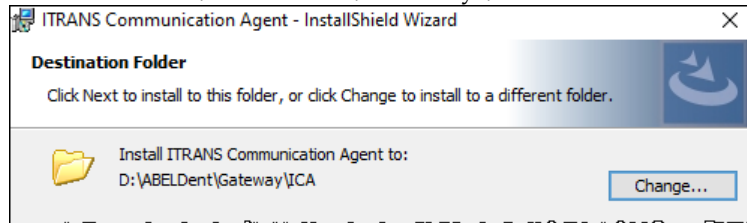
* Unless you are using a named instance as a SQL server

Reinstalling ITRANS

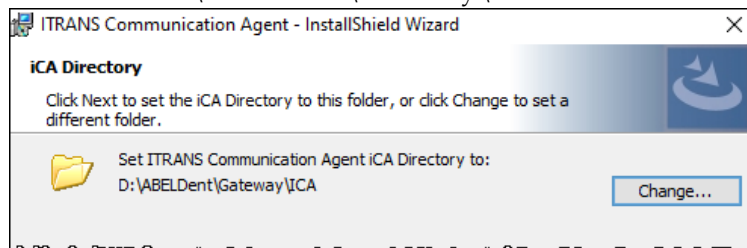
With ABELDent reinstalled to the new drive, ITRANS Communication Agent needs to be reinstalled pointing to the new drive location.

1 Run the ITRANS Communication Agent Installer

2 **Change the install pathway to**
NewDrive:\ABELDent\Gateway\ICA



3 **Change the iCA Directory pathway to**
NewDrive:\ABELDent\Gateway\ICA



4 Proceed through the installer as usual.

Change SQL Maintenance Plan

Upon completion of reinstalling ABELDent and Reinstalling ITRANS, the user must update the SQL Maintenance Plans accordingly

To access the Maintenance plan entries:

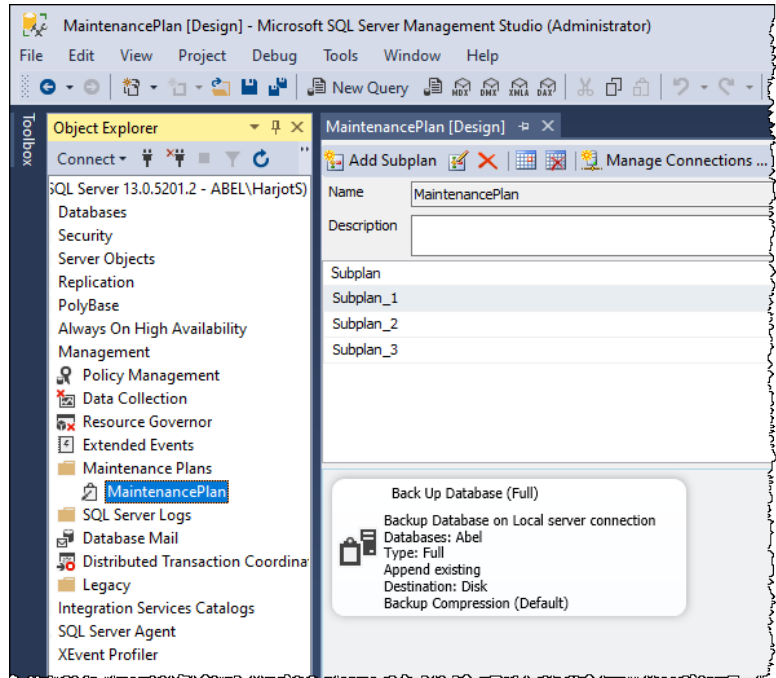
1 Open **SQL Server Management Studio**

2 Open the **ABEL SQL** file

3 From the Object Explorer, **Expand Management**

4 Expand **Maintenance Plans**

5 **Double Click** the Maintenance Plan

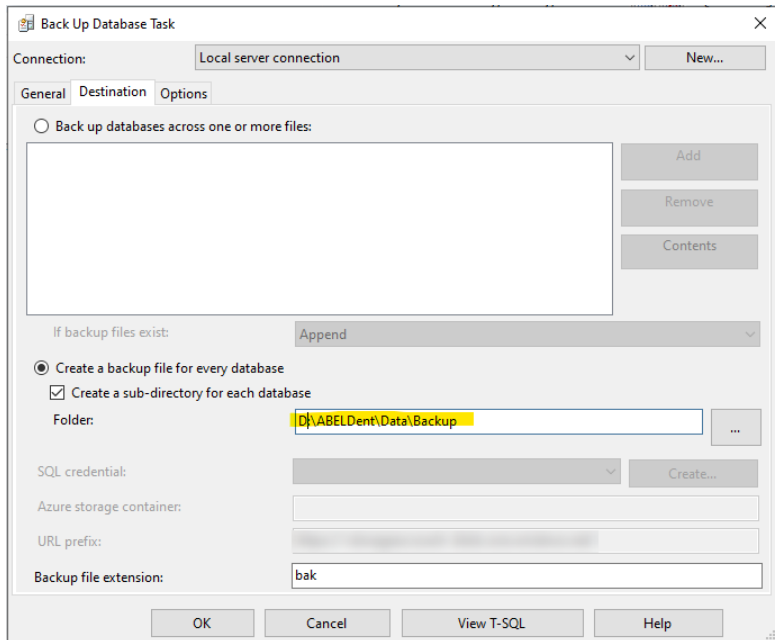


Editing the Maintenance Plans

With the Maintenance Plan open, the user can now edit the sub-plans accordingly, to do this:

1 **Double click** the task, Back Up Database Task window opens

2 Go to the Destination Tab



- 3 Under Create a backup file for every database, **Change the folder pathway to *newdrive:\ABELDent\Data\Backup***
- 4 **Ensure** Create a Sub-directory for each database is enabled
- 5 **Repeat steps 1 through 4** for each existing sub-plan
- 6 **Save and exit**

The Backup Maintenance Plans have been updated and all steps have been completed for moving ABELDent to another hard drive location.

